



9 ORGANIZATIONS. 600 PARTNERS. 1 MISSION.

Improving education, economic, and well-being outcomes for all young Minnesotans

Education Partnerships Coalition of Minnesota (EPC) is a bipartisan group of nine cradle-to-career organizations. We work with cross-sector partners to collectively support 310,000 young people and their families across the state.

OUR VISION FOR MINNESOTA

Our children succeed in school and in life.

Our communities thrive.

Our state is equitable and prosperous for ALL.

WHAT WE DO

Together with our partners, we implement evidence-based best practices in local communities and advocate for state-level policies so that Minnesota is the best state in the country for children to grow up in.

HOW WE DO IT

We work across sectors with young people, parents and caregivers, educators, service providers, local leaders, and subject matter experts. Our work ensures that diverse stakeholders align around shared goals, collaboratively shape policy and program improvements, and leverage data to monitor progress.

WHO WE ARE

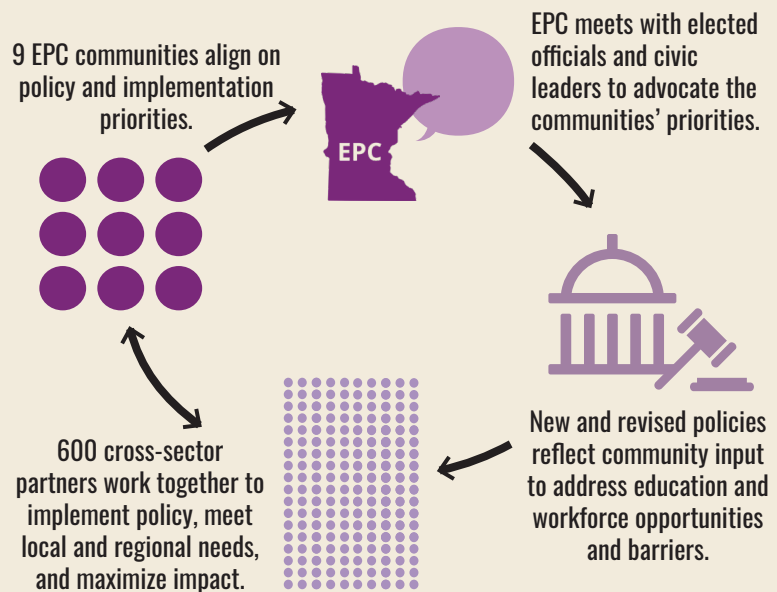
OUR MEMBERS: EPC's **nine members** learn with and from each other, adopting and adapting what works well to our local community contexts. Our work is always **locally decided** and **community driven**.



OUR PARTNERS: EPC is much more than our member organizations. Our **600-plus partners** come from **all sectors that affect the education, economic, and well-being outcomes of young people and their families**, including:

- schools;
- out-of-school and summer programs;
- child care and early childhood education centers;
- hospitals and health centers;
- mental health providers;
- supportive and affordable housing institutions; and
- local and county agencies.

EPC IN ACTION



BRINGING RESOURCES TO MINNESOTA AND OUR COMMUNITIES

\$1 For every \$1 invested in EPC by the Minnesota Legislature → **\$9** EPC and its members secure an additional \$9 investment to support our local communities as well as our shared statewide work.



EPC LEGISLATIVE PRIORITIES 2026

EPC’s 2026 legislative priorities incorporate the input of the nine communities that we represent, including more than 600 partner organizations that collectively support 310,000 young Minnesotans and their families.

Transform Minnesota’s Education-to-Workforce Data Infrastructure

We call on the Legislature to invest in the shared statewide data infrastructure that we all rely on to organize and evaluate programs, safeguard data, and prevent fraud. The State of Minnesota Technology Advisory Committee has identified four priorities for 2026, all of which EPC supports:

- ➔ Establish a chief data officer;
- ➔ Formalize a legal framework;
- ➔ Strengthen data governance; and
- ➔ Study evidence-based policymaking.

In addition, we support the proposed legislation to **include data and technology projects in the state’s bonding program.**

EPC’s unique contribution to all of this work is to ensure that Minnesota’s local communities—the schools, community organizations, cities, and counties that contribute data to these systems—have timely access to accurate and actionable data from these systems.



Reinstate “Sensitive Locations” Designations for Schools and Early Care and Education Facilities

Under the Bush, Obama, first Trump, and Biden administrations, Immigration and Customs Enforcement agents required supervisory approval to conduct operations in and near schools and early learning facilities to avoid traumatizing children. Today, that norm has vanished due to a directive from the Department of Homeland Security. We call for a **unified voice in Minnesota demanding that the federal administration restore "sensitive locations" designations** for schools and early care and education facilities.



WE ALSO SUPPORT OUR ALLIES AND PARTNERS IN PURSUING THE FOLLOWING POLICY OBJECTIVES:

Student Learning and Educational Effectiveness

READ Act

- ➔ Fully fund high-quality implementation.

K-12

- ➔ Support the financial viability of schools related to recent attendance challenges.
- ➔ Fund additional supports for students facing the greatest barriers to success.
- ➔ Honor the rights of all young people to access a free and appropriate education.

City and County Data Infrastructure

- ➔ Invest in technology modernization to improve service delivery and prevent fraud.

Early Care and Education (ECE)

- ➔ Improve access and affordability.
- ➔ Support the financial viability of ECE providers related to recent attendance challenges.

Family Stability

- ➔ Streamline support across agencies for families accessing services.
- ➔ Support the financial viability of families related to recent work and school attendance challenges.

Mental Health

- ➔ Increase access to mental health support for young people, parents and caregivers, and school and ECE staff.

TOGETHER WE CAN HELP YOUNG MINNESOTANS PREPARE FOR A BRIGHTER FUTURE.

For more information, contact John Fanning at john@epc-mn.org or visit www.epc-mn.org.